

# PINE TREE NOTES



GFWC/MFWC Newsletter  
January/February 2009



“It Is Better to Give than Receive”



## President's Letter

It doesn't seem possible it is January 2009. The year has gone so quickly since last May. We are all busy doing our individual club work and working on our community projects. A lot of clubs in Maine do not meet in January and February, but remember - reporting is still done in January.

I would like to thank Lynnette and Gail who did so much to make the GFWC/MFWC Fall Conference such a success. All the clubs in the area helped. They even had a woman from their district who was the “Fancy Nancy” for the evening. The attendance was small, but fun was had by all. The staff at the Holiday Inn outdid themselves.

We have people that are interested in joining our

federation. That is a plus for us and we have some new members. I will be meeting with some clubs in the spring and would be glad to come and visit any other clubs. I want to visit all the clubs in the MAINE Federation during my term as your president.

We need a Convention Chairman from any of the clubs in District #4. Please call me and we can meet as soon as possible to make plans for the GFWC/MFWC Spring Convention which will be held at the Holiday Inn in Ellsworth on May 7 & 8. If your club doesn't meet in January and February, we can still get started and let all the clubs help with the planning.

District Presidents - please let me know when you will have your District Meetings and Art Shows.

We need to coordinate our calendars.

Be sure to give to the local food pantries. Also, if you give money to the Good Shepherd Food Bank they can do so much more with the money than we can ourselves. There is a need in our communities. Remember it is **BETTER TO GIVE THEN RECEIVE.**

Yours in Federation,

*Jane L. Shaw*

## Inside News

Officers	Page 2
District News	Page 4
Departments	Page 8
Committees	Page 10
Poem	Page 13
Tidbits	Page 14
Report Form	Page 15

# Officers



## President-Elect

Can you believe we have entered 2009?!? I hope everyone had a lovely holiday season and is off to a bright start this New Year! As clubwomen, we have projects that are well underway, many wonderful things accomplished and hopefully some great new ideas for the future.

Speaking of the future, it's never to soon to be thinking about what you might be interested in doing in the 2010-2012 administration at the state level. That's all I will say for now - I just wanted to toss the thought out there because we know full well that time travels faster than we can keep up with it. I am open to any thoughts you may have and *any* way you may wish to be a part of team 2010. Please don't hesitate to contact me.

In November I had the opportunity, along with President Jane, to have a delightful time at the District 2 Presidents' meeting conducted by District Co-presidents Marjorie Black and Billie Sherman. Did you notice in the previous Pine Tree Notes that Marjorie and Billie have a District Special Project? Hats off to you, ladies!! Refer to the Nov/Dec issue for more info if you missed it!!

Also in November, several other Board members and I had the pleasure to visit the Patten

Woman's Club. What a vibrant bunch of women! They are very involved in their community and enhancing the lives of many folks in their part of our state - - I heard some really good ideas that I will be sharing with my local club!

As I type this article my thoughts include the wonderful LEADS opportunity that awaits one of our members! It could be *you!* Wouldn't it be great to attend on June 12, 2009 in Cleveland, Ohio? I sincerely hope to receive some applications. Please refer to my article in the Nov./Dec. issue to review the details. Keep in mind the application must be sent to me **post-marked by January 31, 2009**. My address is 935 West Main Street, Dover-Foxcroft, ME 04426. Call with any questions 564-8817 or email at [graymond72@roadrunner.com](mailto:graymond72@roadrunner.com).

Ahead for me this year: I am getting very excited for the GFWC International Convention. I set a personal goal about a year ago and began saving up - - goodness, in only six months I will be on my way to experiencing my first international convention. Cleveland, Ohio here I come! I can't wait!!

Until next time, peace to you and yours!

Suzanne T. Raymond  
President-Elect



## Vice President

The holiday season is about over at our house, or it will be as soon as the tree is dismantled, put back in the box and stored away for another year in the basement. We hope you all made many sweet memories to carry you happily into 2009!

As a reminder, annual club reports should be **postmarked no later than January 31, 2009**. Please send one copy to me at P.O. Box 623 Dover-Foxcroft, Me. 04426. Send a second copy to GFWC Headquarters, Attn: Program Dept. 1734 N Street, NW, Washington, D.C. 20036-2990. A third copy needs to be kept in you club files. The state chairwomen can expect to receive their packet of club reports from me by February 25, 2009. The chairwomen in turn will need to send their report to their GFWC counterpart, **postmarked no later than March 15, 2009**.

It is important to remember those around us in our own communities who are hungry, cold and in need. Everyone seems to remember the needy during the holidays and then forget that those folks will be just as hungry, cold and in need in the months that follow Christmas. Please continue to support our GFWC/MFWC President's Project, "The Food Pantry" and her theme, "It Is Better to Give than Receive". By continuing to help those less fortunate than ourselves, we will be greatly blessed.

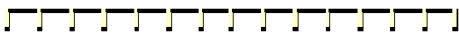
Anne H. Cress  
Vice President



**Recording Secretary**

Greetings and Happy New Year to all. Have a wonderful winter. I look forward to seeing you in the spring. In the meantime, keep working on those special projects and programs. That will keep you busy and winter will go faster

Minnie McCormick  
Recording Secretary

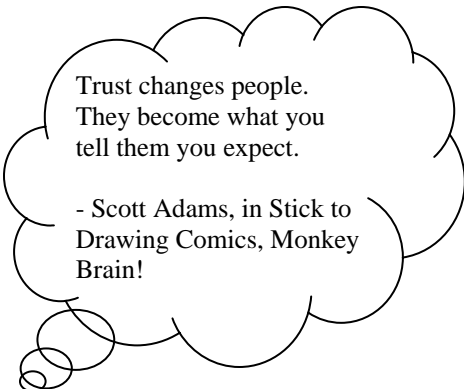


**Treasurer**

Thank you to all the clubs who sent in their dues by the January 1, 2009 deadline. For any of you who might have missed the deadline, please be sure to forward your dues to me as soon as possible. Mail \$18 per member to Gloria Leveillee, PO Box 42, Limerick, Maine 04048.

Hope everyone has had a great start to the New Year! I look forward to seeing you all at Spring Convention.

Gloria P. Leveillee  
Treasurer



Trust changes people. They become what you tell them you expect.

- Scott Adams, in Stick to Drawing Comics, Monkey Brain!



**Corresponding Secretary**

The next Pine Tree Notes deadline is: **March 1.**

There is NO wiggle-room with this deadline. Convention registration must be mailed in a timely fashion; the beginning of the month is the busiest time for my work schedule; and the printer will be in the midst of doing town reports, leaving no extra time to fit this into her schedule if we are late. Your cooperation is anticipated and appreciated.

Reminder: If you find errors in the Directory, or if your contact information changes at any time, please send me the change in writing to be included in a future issue of this newsletter. We want everyone to have access to your correct information.

We have moved (kicking and screaming???) into the high tech era. Pictures are now fairly easy to incorporate into this newsletter, so if you have a picture of a special club activity that you can email to me, we can try to include them. Bearing in mind, however, that the Sept/Oct and Mar/Apr issues are pretty full with registrations and such so there is less room for extras than the fall/winter issues. We do want to know what you are doing!

Libby G. Wiers  
Corresponding Secretary



**PRESIDENT'S SCHEDULE**

**March 10** – Waldoboro Woman's Club

**March 12** – GFWC/Gorham Woman's Club

**March 19** – Women's Legislative Council

**April 16** – Women's Legislative Council

**April 21** – GFWC/Miosac Club, Dover-Foxcroft

**April 23** – Livermore Falls Women's Club



# District News



## District 1

Although many of the clubs in District One don't meet in the winter months, that does not mean they have not been busy or will be busy come March.

The **GFWC/Westbrook Woman's Club** had their very successful Lobster Roll Box Lunch in November which is their major fund raiser for the year and raised about \$8,000.00. Every member gets involved. In November, they also honored 20 members with 25 year pins for their 25 and 25+ years of service. (This is a fabulous idea - since beautiful silver 25 year pins are now available from GFWC). Six of those honored were Past Club Presidents. Ethelyn Chase, past president, had already received a gold 50 year pin and was honored for her 58 years of service. Margaret Robie, past president, received a 50 year pin. They featured a speaker from the local Ronald McDonald House and all brought paper products for her to take back for use at the house. Let's not forget the Mad Hatter's Tea Party as part of the 8th annual Festival of Trees Celebration in Westbrook. They served tea and goodies to members of the community and guests from many local nursing homes. Entertainment was provided by the Jubilee Singers.

The **GFWC/MFWC Cosmopolitan Club of Bath** had a

wonderful Holiday party with singing, harp playing, Santa Claus, great food and a Yankee Swap. They will be welcoming Mary K. Libby, 2008 LEADS graduate, to present a program on "Conflict Resolution" in March. Sadly, they also report the loss of two long standing members who will be honored at spring convention.

The **GFWC/Gorham Woman's Club** had an auction of Christmas ornaments and decorations and raised over \$100.00 for their scholarship fund. They had so much fun, they are planning on doing that again next year. In January they will have a speaker from the Gorham Historical Society and in February they will hear a speaker from the director of the Gorham Recreational Department and its activities and how the club can take advantage of those activities. March will bring a visit from GFWC/MFWC President Jane Shaw. They also submitted over 15 recipes for the cookbook the MFWC is assembling.

The **GFWC/Research Club of Limerick** has a hugely successful sale of December Gift Calendars. Most gift items are donated and the club raised over \$500.00 with this project. Many townspeople turned out for their the annual "Tree Lighting and Carol Sing" after which they served cookies and hot cocoa to all who joined them across the street at the Town Hall. This had been an annual event for over 25 years.

The days are already getting longer and I, for one, am anxiously awaiting spring, so I try to remember; "If we had no winter, the spring would not be so pleasant: if we did not sometimes taste of adversity, prosperity would not be so welcome". Anne Bradstreet

Sally E. Manchester  
President



## District 2

Aprons...Mob Hats...Pajamas...Barbies...Bugs... and a 1-room Schoolhouse! What do all of these things have in common? Of course...it's GFWC/MFWC Club Members!

Five members of the **GFWC/Skowhegan Woman's Club** (plus two granddaughters with Barbies) donned "Mob Caps and Aprons" and collected donations in soup kettles for the local food cupboards at the Holiday Stroll. Fundraisers included a "Yelling Auction", items sold at a local craft fair, and a class on "paper embroidery" - and they still found time to make over 100 decorations for the "meals -on-wheels" program and local nursing homes.

The **GFWC/The Dove Society** hosted a special showing of The Polar Express movie at the local theater. Dressed in PJs, the members read the book "The Polar Express" aloud to the children and parents. This was followed

by the showing of the movie. Their fundraisers included selling RADA and decorated wreaths.

The **GFWC/Semper Fidelis Club** held a craft center for children at the newly refinished Renaissance Center. Their major fundraiser was selling Thanksgiving pies. They hosted a dance for 5th through 8th grade students at the local Skowhegan Community Center - having a "Sports" theme and providing lots of door prizes for this sometimes overlooked 'middle years' group. A family was adopted for both major holidays and baskets filled with food were provided.

Both clubs, the GFWC/ The Dove Society and the GFWC/ Semper Fidelis Club, worked diligently to decorate unusual trees for the "Festival of Trees" that is held at the Goodwill-Hinckley School each December. The Dove Society followed the Polar Express theme, while the Semper Fidelis Club played with "Bugs" for their tree.

The **Waldoboro Woman's Club** was scheduled for an update on the Public Library in November and a program on volunteer work in December.

The **Livermore Falls Women's Club** has 7 new members as a result of a membership tea, with another member pending. At their meeting, the speaker gave information about families of servicemen and how members can be of help to them. Instructions were also distributed for mailing packages and cards to wounded soldiers. In advance of the holi-

days, they volunteered at the Paper Heritage Museum where they decorated a room for their Open House. The club members also helped plan the Holiday Celebration at the Washburn-Norlands Living History Center. Lucille Lavoie writes, "...we enjoyed our traditional annual Christmas lunch with the Historical Society. We listened to carols from around the world. Both organizations contributed \$427.00 and 94 lbs. of food to our local food pantry. We joined Norlands for Christmas at Norlands. We served cookies and cocoa in the big kitchen and taught school in their one room schoolhouse. The next day was open house at the paper museum. We sold candles with a museum theme, small breads, and hand made Christmas ornaments. - a successful fundraiser."

Yes...bugs, holiday celebration, and all...we've been busy and looking forward to a great, rewarding 2009!

Billie Sherman  
Co-President

I still find each day too short for all the thoughts I want to think, all the walks I want to take, all the books I want to read, and all the friends I want to see.

- John Burroughs  
(1837-1921)



## District 3

**GFWC/Newport Woman's Club** held their Christmas Party in December. Members brought food items for a basket to be given to the needy in the community. Christmas gifts were brought to the meeting for a family that had lost their home to fire. A regular meeting will be held at Mary Ellen Hayes' home on January 8 at 1:30 pm. A Valentine Party for Seniors will be held at the Newport Inn at 2:00 pm on February 12. There will also be a speaker on Heart Disease prevention.

The **GFWC/ Cosmopolitan Club of Dover-Foxcroft** was treated to a virtual trip across Canada, courtesy of a member who had travelled there and had brought back the video. The scenery is beautiful! We were both entertained and informed when an officer of the local American Legion came to share Veteran's Day stories. We put in more time making valentine cards and enough were made to completely cover the Christmas tree we decorated at the YMCA Festival of Trees. One member made some paper doves and snowflakes which made the whole tree sparkle. And now we're prepared in advance for distributing the cards in February! Our December meeting was especially festive, as not only did we have our usual Yankee Swap, but it was also the 110th anniversary of our club. We've been bringing non-perishable goods to every meeting this Fall to donate to a local food pantry. After a break, we'll start meeting again in January.

The **Pittsfield Tuesday Club** had Beth Bacon, LTR Coordinator, Prosthetic Services speak to the club about women's health, especially breast cancer, in November. There was a question and answer session after her talk. An evaluation form was filled out by each member that was sent to Eli Lilley and Company, the firm that provides the breast cancer kit provided to club-women through GFWC. In December, the annual Christmas dinner was held with entertainment by the Maine Central Institute Chamber Singers. Members of the club bring food items to every meeting for the Pittsfield Food Bank.

The **GFWC/Dexter Women's Literary Club** put on a bake sale at the voting polls on election day, and boy, was it ever successful! Three full tables of homemade baked goods and they were all practically sold out before noontime. We're definitely holding a table to do it again for next year, only this time we'll make more pies. At our November regular meeting, members brought in many food items for the local food bank and Christmas items for teenagers that we give to the Sunshine Club. The guest speaker was Doug Smith, who talked about the Hospital Chaplaincy Service. Members also found out that the sashes fundraiser they put on at the MFWC Fall conference sold 15 and orders for more were taken for the Spring convention in May. In December, members went to President Laura Neal's house for a Christmas party. Christmas cards were

signed by members, to be distributed to area nursing homes and boarding homes. Members also brought their favorite recipes, which were collected to be mailed to MFWC for their cookbook fundraising effort. Everyone had a wonderful time eating and playing games and listening to Christmas music.

Marjorie Goodwin  
Co-President



## District 4

The **Acadian Community Woman's Club** hosted the November meeting with the **GFWC/Narraguagus Women's Club** in Milbridge at the Women's Health Resource Library. Mary Okin, of Downeast Counseling was the guest speaker. December brought the annual Craft Fair and public supper where members donated crafts and pots of chili to raise money for the Sumner High School scholarships. The club also donated to the local food pantry as well as adopting families for the holidays. Over 20 families were assisted during the holiday season. The club held their annual Christmas party where cookies and gifts were exchanged and secret sisters revealed. January will bring a scrapbooking workshop and luncheon hosted by member Dolora Conley, the former owner of The Crop Shop. **The Acadian Community Woman's Club will host an afternoon of fun with a luncheon and Bunco**

**for all District 4 clubs in Winter Harbor on Saturday, February 21st. This event will also serve as the District 4 meeting.** More details to follow to individual District 4 clubs.

Christmas is a time for giving, and like any family, the **Hancock Woman's Club** has special traditions of celebrating, caring, and sharing. At the December meeting, they exchange gifts in a Yankee Swap and enjoy holiday refreshments. Members bring donations of household supplies and personal items for the Emmaus Homeless Shelter, which are always needed and appreciated. Many years ago, the club started the Mitten Tree tradition, decorating a tree at Hancock Grammar School with handmade mittens. This year, they presented hand-knit and store-bought mittens and gloves on the tree to kindergarten through second graders after reading Christmas stories. The club's Santa Fund project involves the whole town in providing gifts of school supplies, books, games, warm clothing, and toys to area children who otherwise would not have much at Christmas. In the fall, the Club sent out a letter to all residents requesting donations, and they were gratified that despite the down economy, people responded generously, so the club was able to deliver "Santa sacks" to over 90 children on Christmas Eve day. Members did the shopping. Wrapping parties in the clubhouse added fun to the preparations. In January, The Executive Board (only) meets to prepare MFWC annual reports. The Club's February meeting features "Game Night" - members bring favorite board and card games for

a welcome get-together during cabin fever time. In March, with the worst of the winter over (hopefully!), the Club gets back to its regular schedule of speaker programs and fundraising activities.

**GFWC/Lubec Woman's Club's** October meeting was very productive, with 5 new members joining the club. Maine State President, Jane Shaw, attended and shared with the club her experiences at the convention in Chicago, visiting the GFWC Headquarters in Washington, her special project and how proud she was to be president. The club also made a monetary contribution and donated food staples to their local food pantry. In November a local school art teacher spoke to the club about her need for supplies and assistance with big or "messy" projects such as papier mâché. A monetary donation was made for supplies and the club looks forward to helping out when needed. In December the club held a cookie swap and again collected money to send to the local food pantry. An additional \$300.00 was contributed. The monthly "Senior Social" continues to be held and everyone enjoyed Christmas Bingo with lots of presents and happy seniors. The club has decided that they will not hold the "Senior Socials" during the months of January and February due to inclement weather and poor road conditions.

GFWC/MFVC President Jane Shaw was a guest of the **GFWC/Narraguagus Women's Club** holiday luncheon and Yankee swap gathering at Barbara Kneeland's home. The

eleven members and two guests were treated to a five-course meal created and served by two members, Cathy and Macie. What a lovely touch to begin the holiday season! Frank Fredenburgh furnished the musical background for the occasion. The Club's holiday project was to collect food/monetary donations for the local food pantry in Cherryfield. The members present at the holiday luncheon collected goods and monetary contributions totaling \$122.00. The donations were given to the Weald Bethel Food Pantry. The Club raised over \$350.00 for its scholarship fund from its annual Thanksgiving Pie Sale. The Club members were guests of the Acadian Women's Community Club at a joint November meeting held in Milbridge at the Women's Health Resource Library. The guest speaker, Mary Okin of Downeast Counseling Services, gave a program on Mental Health. Cathy Farrah, a new member to the group, presented a program on Bone Building Exercises. Members came prepared to join in a sample of the exercises. The club's next activity will be a Valentine Party for the residents of the local nursing home. The Club also furnishes Valentine Party refreshments and party items to the local Residential Home. The regular meetings of NWC will resume in April.

Health and Happiness to all the GFWC/MFVC members in the New Year.

Sherri Walsh  
President



## District 5

The District 5 President's position is still open and we, of course, would love to have someone jump in and volunteer! Many tell me that it is one of the most fun and rewarding positions to serve in. It's not too late! Let me know if you are interested! In the interim, I am happy to share some of the great things happening in District 5.

The **Patten Woman's Club** is keeping very busy! They organized a group of local children to participate in the Unicef Trick-or-Treat project and collected almost \$300!! They also helped the fire department organize a brunch with Santa; it, too, was a very successful event - pancakes and sausages were served and the children/parents loved visiting with Santa. Another great idea, the club raffled off a Christmas tree beautifully decorated with folded dollars equaling \$100. They managed to squeeze in some time to celebrate the holiday season (as well as enjoy other) with a Christmas meeting - a fun Yankee swap. Another project accomplished was the collection of donations for the Battered Women's Shelter in Houlton. President Jutta Buyer shared that they have had some sadness as well. In 2008, two dear members, Dorothee Susee and Kay Peterson, passed away, and they will be remembered for great friendship and the great things they did. For the upcoming year the Patten Woman's Club has a lot of things planned and committees are meeting soon.

**Patawa Club** has been busy with its fundraising projects. Before Christmas they sold jewelry and wrapping paper. They were also involved with a very successful holiday auction at UTC where the students who are learning to be chefs prepared a nice meal for them. Now that the New Year has begun they are planning to focus on some civic projects. The first one will help support some of the local food cupboards. A really creative idea I learned from Co-president Amy St. Peter - she reports that they are going to collect ingredients to make "soup in a bag." They have chosen two recipes that are simple and made from nonperishable items which will be donated to the food cupboard. In the spring they are also planning to make "May Baskets" and hand them out to the troops when they come through the Bangor airport. The Patawa Club has some other civic projects and fundraising projects in the works but they have not been finalized yet.

Stay tuned for updates from this district in the next issue of Pine Tree Notes for these and other stories!

Suzanne Raymond  
 MFWC President-elect  
 Reporting for District 5

The only nice thing about being imperfect is the joy it brings to others.

- Doug Larson

# Departments



## Arts

The MFWC Art Department depends on you. The donations that have arrived are much appreciated. Thanks to the GFWC/Miosac Club, GFWC/Lubec WC, GFWC/Westbrook WC, GFWC/Gorham WC & GFWC/The Dove Society.

Creative Arts Program Update on GFWC Great States Photo Contest. Lets get started. Photos should be in color and in horizontal format. Keep in mind that GFWC statement declares that by submitting your photo, you provide royalty-free perpetual license to GFWC to use, reproduce, post, display, create derivative works, sell, license, or sublicense the work in any media without limitation, for commercial or non-commercial purposes. So give it some thought before submitting a photo.

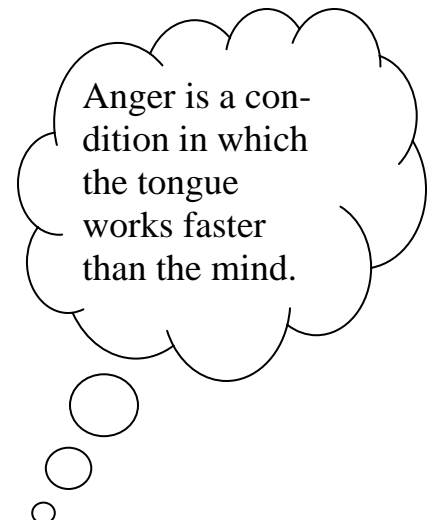
Deadline for World in Pictures Photography Contest & GFWC Volunteers In Action

receipt of photos is April 15, 2009. Send to Art Department Chairman, Barbara Hathaway. Creative Writing Contests for Clubwomen deadline is March 1, 2009. This includes Poetry & Short Stories. If you want to know that your material arrived, just include your e-mail address or a self addressed, stamped postcard for reply.

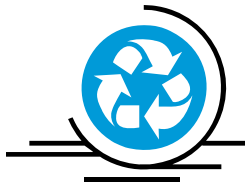
MFWC High School Art Contest plans are forming in each district. Start early and get many members to help. Remember to do a press release before the event and after. This year original computer-generated art is included. Check the MFWC red directory for the contest rules.

Let's continue to support art in our communities and MFWC Club members in their creative arts. There are many ways to do this. Support a community artists, attend art events (visual & audio), sponsor an artist to do an outdoor workshop, attend a pleine air retreat and paint, paint, paint.

Barbara Hathaway  
 Chairman







## Conservation



Here are a few tips to fight global warming:

- Recycle and buy minimally packaged goods as much as possible.
- Wash clothes in cold or warm water – most detergents will handle this well.
- Install low-flow shower heads to use less water.
- Run only a full dishwasher and try to open the door to dry dishes to avoid using heat cycle.
- Replace standard light bulbs with compact fluorescent bulbs (but you know that).
- Plug leaks in windows and doors (in older homes with old wooden windows, try using strips of foam between frame and the window).
- Replace old appliances with energy efficient models (great excuse to update the kitchen).
- Walk, bike carpool or use public transportation (good luck in Maine) whenever possible).
- Adjust your thermostat – lower in winter, higher in summer.

These tips come from the Environmental Defense Fund with a few of my own comments.

I wish you all a Happy, Healthy 2009.

Judi Lawrence  
Chairman



## Home Life

ID Theft is the one part of my programs that concerns me the most. I have reported on this in the past and last year I listed six safeguards to use to keep your identity safe.

We had a speaker on ID theft and there some that need to be considered.

1. Never leave transaction receipts at ATM machines, on counters at financial institutions, or at gasoline stations.
2. Don't carry your Social Security card or birth certificate -leave them in a secure location. If you go to Canada, I believe you have to have two identifications and a birth certificate; if used, it should be kept in a safe place on your person. When I went to England, I kept my birth certificate and passport in a body purse so I knew where it was at all times.
3. Don't disclose credit card or other financial account numbers on a Website unless the site offers a secure transactions. Before you input personal or financial information on a Web page, first make sure the site has secure -that is, encrypted - data transaction. There are two ways

you can check whether a Web page promotes secure data transaction:

- a. An icon of a lock will appear in the bottom strip of the Web browser page.
  - b. The URL for the Web page will change from "http" to "https" for the page at which you input the personal data.
4. Beware of mail or telephone solicitations that offer prizes or awards - especially if asked for personal information or financial account numbers.

Got my mammogram last week, and I hope all of you take this step to safeguard your health.

Hunger in America seems to be on the minds of everyone these days and we need to donate or volunteer at your local food bank. I challenge each of you to grow a vegetable garden and donate the fresh produce to your local food bank. A tomato plant will fit into a flower pot.

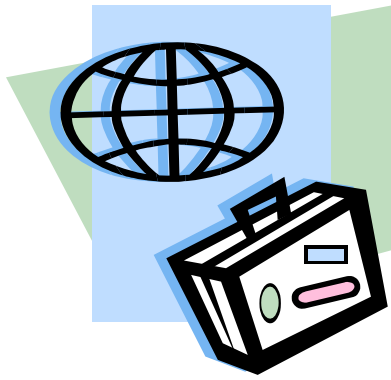
We need to get our reports in on time. Let's aim for 100%.

Some of you I will not see until May, so ride the winter out safely.

Corinne Neal  
Chairman

A dog is the only exercise machine you cannot decide to skip when you don't feel like it.

- Carolyn G. Heilbrun  
in The Last Gift of Time.



**International Affairs**

Since I spoke to you last at the Fall Conference in Waterville, your checks benefiting Plan USA, Care, and Unicef have been coming in to me to be forwarded to our treasurer, and I am so very grateful to you all. We all are trying to deal with the changed economy and trying to figure out where we could cut down somewhat. That's why I am especially happy that you continue keeping our International Affairs Department in your mind! To those of you who graciously took some of the Unicef Aids Awareness Pins and also the orange Trick-or-Treat boxes and dutifully sent me the donations you were able to get – THANK YOU SO MUCH!

Now I'm waiting anxiously for your Annual Reports and, hopefully, some interesting narratives.

While we didn't win the wonderful trip award from Plan USA during the last administration, it is never too late to try again. You could hold a Silent Auction or arrange a luncheon featuring an International menu. Again, Plan USA is offering the chance for a trip to a country

where they do their work. All it takes is a donation of \$300.00 to be eligible to have a chance in the annual drawing.

Hoping you had a peaceful, relaxing, enjoyable Christmas time, I am wishing you all a Happy, Healthy New Year.

Ruth Dietze  
Chairman

**I WISH YOU ENOUGH**

I wish you enough:

- sun to keep your attitude bright no matter how gray the day may appear.
- rain to appreciate the sun even more.
- happiness to keep your spirit alive and everlasting.
- pain so that even the smallest of joys in life may appear bigger.
- gain to satisfy your wanting.
- loss to appreciate all that you possess.
- hellos to get you through the final good-bye.

- Unknown

**Committees**

**Delegate's Fund**



“Thank you” to the following clubs for your contribution to the Delegates Fund:

- GFWC/Dexter Women's Literary Club
- GFWC/The Dove Society
- GFWC/Gorham Woman's Club
- GFWC/Lubec Woman's Club
- GFWC/Westbrook Woman's Club

May you all have a Healthy, Enjoyable New Year.

Juanita Pressley  
Chairman



**Educational Loan Fund**

**To: District Presidents:**

Now that the holidays are over, it is time to think of spreading the word concerning our interest-free loans of \$600.00 and the Maude MacKenzie Scholarship of \$1,000.00, application for which is available to any 2009 high school graduate.

I will be writing to you with further information concerning the loans and scholarship within the next two weeks. This year, especially, students will be exploring every available assistance in meeting college ex-

penses. We can help by distributing our materials to the high school guidance offices in our areas.

Your assistance in this very important service to our youth is much appreciated.

Alida Coates  
Chairman



### Endowment Fund

It's already been a long winter and I'm looking forward to seeing everyone in the spring.

Thanks to all clubs that have continued to support this very important MFWC Committee. Donations are continuing to arrive for The Endowment Fund. Thanks to the following MFWC clubs for their support:  
GFWC/Miosac Club  
GFWC/Dexter Women's Literary Club  
GFWC/Lubec Woman's Club  
GFWC/Newport Women's Club  
GFWC/Westbrook Woman's Club  
GFWC/Research Club of Limerick  
GFWC/The Dove Society.

As stated before, any donations can be sent to this chairman and the clubs will be listed in the next Pine Tree Notes. Keep up the good work.

Patricia Smith  
Chairman



### Fundraising

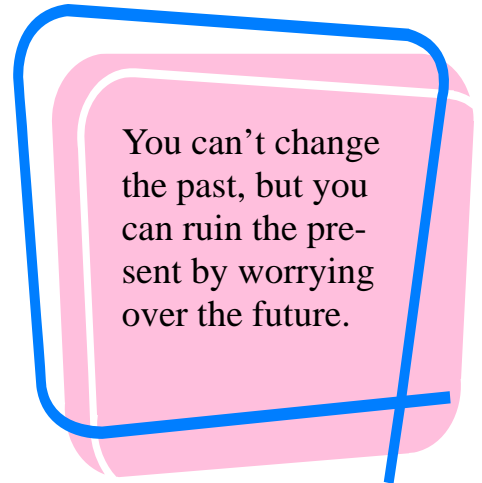
A big thank you to all members who patronized the fundraising table at Fall Conference. Again, if any club wishes to have Rae and I sell items from our table, contact us and we will see if we can "strike a deal". The proposed cookbook is creating much enthusiasm among members of MFWC. Quite a few clubs have sent recipes and it is not too late for any club that has not sent recipes to send them. But, please, send them to Rae Hersey as Marge Goodwin will be in Florida until the 5th of March. This project will be the primary fundraiser for President Jane's term. Looking forward to seeing many of you at Spring Conference.

Marge Goodwin  
Raejean Hersey  
Co-Chairmen



Giving never happens by accident. It's always intentional.

- Amy Grant, in  
Mosaic Pieces of  
My Life So Far



You can't change the past, but you can ruin the present by worrying over the future.



### Membership

Happy New Year everyone.

"You Acted in Oct" and congratulations to all the new members - GFWC/MFWC Cosmopolitan Club of Bath with 8 and Livermore Falls Women's Club with 5. Great work ladies! To all the new members in all the clubs - welcome, and we hope your membership offers meaning and success.

Welcome each new member, listen to their ideas, mentor them so they will learn how the club works, and include them in the projects. Also, include some fun at the meeting as "all work and no play makes a club meeting dull."

Congratulations to GFWC/Cosmopolitan Club of Dover-Foxcroft celebrating a 110 year anniversary!

Nancy Kenty  
Chairman



## Maine Youth Leadership

### **MotivateME**

Leadership  
– Volunteerism –  
Character

[www.mainevothleadership.org](http://www.mainevothleadership.org)

*“There is no way I can explain what MYL has done for me, but I can say that it will stay with me for the rest of my life. Those four days were the best four days of my life and I would not trade them for anything in the world. MYL is like nothing else in the world and I can promise the sophomore who is chosen for 2009 that it will be so much more than he or she could ever expect.”*  
Casco Bay High School Alumni - 2008

As an organization of leaders and volunteers, what better and more satisfying project could clubs of the Maine Federation of Women’s Club have. Such an endeavor is the support of a young student at a critical time, a time when he/she begins to decide which path in life he/she will chose and what he/she wants to stand for. It is a character building experience which empowers them to make changes and to give back. Isn’t that what we as club-women aspire to accomplish in our communities? As volunteer organizations, the MFWC and MYL exemplify the community spirit of the citizens of Maine. These organizations care deeply about Maine’s youth and generously donate their time and money to support this opportunity and learning experience.

Nominations from high schools have been coming in, but there are many more to be heard from. Several volunteers will begin calling schools reminding them to nominate their deserving sophomore. Besides your financial support, clubs could assist with the nomination process by contacting the guidance department at the local high school to insure a nomination. The December 31 deadline has passed, but it’s never too late. We want ALL high schools represented at the seminar.

Thank you so much to the following clubs for their generous donations:

GFWC/Gorham Woman’s Club  
GFWC/Lubec Woman’s Club  
Patawa Club  
Waldoboro Woman’s Club  
GFWC/Dexter Women’s Literary Club  
GFWC/Research Club of Limerick  
GFWC/Newport Woman’s Club  
GFWC/Westbrook Woman’s Club  
GFWC/The Dove Society

In these difficult economic times, MYL hopes for your continued support more than ever.

-----  
**A full scholarship is \$200, but any amount given is greatly appreciated. Contributions and questions may be directed to:**

**Gloria Tewhey**  
**MYL Chairman**  
**3 Valley View Dr.**  
**Gorham, ME 04038**  
**(207)839-4157**  
[gtewhey@maine.rr.com](mailto:gtewhey@maine.rr.com)



**Good Shepherd Food-Bank**  
Feeding Maine’s Hungry



## MFWC President’s Project

“The Food Pantry: Partnering with the Good Shepherd Food Bank” is the President’s Project for 2008-2010. I continue to be amazed and humbled at how you all have grabbed this project with both hands and jumped in to help those in need in your communities. Thank you again for caring and sharing your time, talent and treasure.

Donations have been received from the following since the last issue:

Lillian Herring (Anne Cress’ mother)  
GFWC/Dexter Women’s Literary Club  
GFWC/Lubec Woman’s Club  
GFWC/Newport Woman’s Club  
GFWC/Westbrook Woman’s Club  
GFWC/Gorham Woman’s Club  
GFWC/The Dove Society

We currently have received \$537.00, representing 2148 meals provided. Kendra and I have decided that, in this declining economy, \$5000 might be a bit of a stretch to set as a goal for this administrative term. Therefore, we have set a goal of \$4000 - representing 16,000 meals provided - before May 1, 2010. Perhaps we will even top that! But, remember that donations at the web link (next paragraph...)

which will be tallied by Good Shepherd Food Bank (GSFB), and your local donations also count (see report form inside the back cover.)

In the Nov/Dec issue, we included the web link to "our" page at the GSFB website, where donations can be made securely by you or your family and friends who would like to help our MFWC efforts. Our web designer will soon put a link on the MFWC website to make it easy - meanwhile, copy/paste the following into your browser:

[http://gsfb.org/how\\_to\\_help/donate/MFWC](http://gsfb.org/how_to_help/donate/MFWC)

Donations by phone or mail directly with GSFB should clearly indicate that they are to benefit the MFWC/GSFB partnership.

Don't forget those Shaw's receipts! I have received a few thus far and will be sending them to our contact at GSFB shortly. Such a painless way to make a donation - 1% of the total - for shopping you would be doing anyway! Shaw's receipts can be sent to either Kendra or myself.

At Spring Convention, look for our display - articles demonstrating the need and a visual display of donations to date, so be sure and report by May 1, 2009.

Meanwhile, our thanks for all that you are doing for your neighbors!

Libby Wiers  
Kendra Chubbuck  
Co-Chairmen

Nonie MacBride read parts of the following poem at Fall Conference as part of her presentation. It was written by her husband, Dr. Robert G. MacBride, for Noni when she presided as State President at the Maine Federation of Women's Clubs Diamond Jubilee Banquet. Thanks, Nonie, for sharing this with our members.



## DIAMOND JUBILEE

When you think about a Diamond  
Like - in the Diamond Jubilee,  
And you think about the friendships here  
You somehow come to see -

That true friendship is like a diamond  
In a great, great, many ways,  
For it shines and glows and glistens  
And will last you all your days.

When you first meet up with friendship  
It can sure seem kind of tough -  
Just plain homely, - unattractive -  
Like a diamond in the rough.

Doesn't show much outward evidence  
Of the true worth underneath.  
The dull and drab exterior  
Shows not all it can bequeath

To those who really work with it,  
To polish, cut and set  
Through patience, understanding  
And perhaps some listening yet.

Friendship, like the diamond,  
Will be found to show response  
By taking on a brilliance -  
A deep luster and a warmth

(continued on p. 14)

That can fill your heart with singing,  
 Bring it joy and hope and life -  
 Like the diamond on the finger  
 Of a happy well-loved wife.

Yet - with all the diamond's luster  
 And its rainbow hues - so free,  
 Perhaps its greatest asset  
 Is its durability.

Like it, true friendship will withstand  
 The ravages of time - and -  
 Still retain its beauty - brightness  
 No matter what the place or clime.

So the Friendship and the Diamond  
 In a quiet - wondrous way,  
 Increase more and more in value,  
 As we use them, day by day.

RGM - May 9, 1967

# Tidbits



## Directory Corrections

P. 32 - Amy Hale, Outlook Sec. -  
 new address/phone:  
 71 Pittsfield Ave./938-7027

P. 33 - Bernice Ramsdell, Ursula  
 Penniman VP - new address:  
 RR 31, Box 92

P. 35 - Joyce Noonan, Skowhegan  
 Woman's Club Treas. - change  
 zip/email: 04976/

janoonan@beeline-online.net  
 Suzi Barbee, Waldoboro VP -  
 change email:  
 suzivic@verizon.net

P. 36 - Carolyn Leavitt, West-  
 brook Sec. - add after street ad-  
 dress: #78  
 Elizabeth Young, Westbrook  
 Treas. - new email:  
 wyoung@gwinet



## Meeting Dates

### 2009

- February 14 - St. Albans  
Winter Board
- May 7-8 - Ellsworth  
Spring Convention
- June 13-15 - Cleveland, OH  
GFWC Convention
- July 15 - Skowhegan  
Summer Committees
- October 8-9 - Lewiston  
Fall Conference
- October 16-18 - Massachusetts  
New England Region

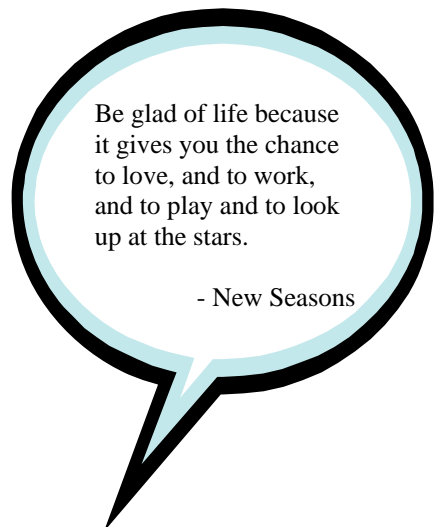
### 2010

- February - St. Albans  
Winter Board
- May 6-7 - Orono  
Spring Convention
- June 12-15 - Omaha, NB  
GFWC Convention



## Pine Tree Notes Correction

Apologies to Anne Cress.  
 I intended to include a photo  
 credit last issue, but forgot to go  
 back and put it in... The lovely  
 photos of Fall Conference were  
 sent to me by her. Thanks, Anne!



**GFWC/MFVC President's Project - Club Reporting \***

Club donation to GFWC/MFVC President's Project \$\_\_\_\_\_

Club donation to local food-assistance program \$\_\_\_\_\_

Individual members' donations  
to GFWC/MFVC or local programs \$\_\_\_\_\_

Value of in-kind donations to local programs  
(food collections...) \$\_\_\_\_\_

Volunteer hours on behalf of local programs \_\_\_\_\_hours

Name of Club \_\_\_\_\_

Name of person reporting \_\_\_\_\_

Phone No. of person reporting \_\_\_\_\_

Date sent: \_\_\_\_\_

\* Send a form after each donation/collection/program **OR**  
send one with totals for this club year (July 2008-May 2009)

Please note that donations via MFVC/GSFB website will be tallied separately by GSFB for purposes of our final totals, as will the value of Shaw's receipts, and should **NOT** be included here.

**Send form to:** Libby Wiers, PO Box 159, Saint Albans, ME 04971

**DEADLINE: May 1, 2009**

# GFWC/Maine Federation of Women's Clubs



116 years of Volunteer Service



*"It Is Better to Give than to Receive"*

**Pine Tree Notes  
Next Deadline  
March 1, 2009**

Libby Wiers  
Corresponding Secretary  
PO Box 159  
Saint Albans ME 04971-0159